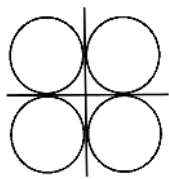


ST. PAUL'S CHURCH



783 Hard Road, Webster, New York 14580

January 25, 2026 Third Sunday in Ordinary Time

Mission Statement

St Paul's Parish Family exists for the purpose of witnessing and proclaiming the message of Jesus Christ, that message proclaimed in word, worship, service: love God, love your neighbor as yourself.



3RD SUNDAY IN ORDINARY TIME

Jesus began to preach
and say, "Repent, for the
kingdom of heaven
is at hand." - Mt 4:17

Excerpts from the Lectionary for Mass ©2001, 1998, 1970 CCD, ©LPI

Mass Times

Saturday at 4:00 p.m.
Sunday at 9:00 a.m. & 11:00 a.m.

Daily Masses

Monday, Tuesday, Wednesday &
Thursday at 8:30 a.m.

Confession

Saturday at 2:00-3:00 p.m.

Adoration of the Blessed Sacrament

Wednesday at 9:00 a.m.

Live Stream Mass via YouTube

Saturday at 4:00 p.m.
Sunday at 9:00 a.m. & 11:00 a.m.

**Monday, January 26*****Sts. Timothy & Titus, Bishops***

8:30A Mass

11:00A Book Club

Tuesday, January 27***Weekday***

8:30A Mass with anointing

11:00A Staff mtg.

12:00P Rosary Group

Wednesday, January 28***St. Thomas Aquinas, Priest & Doctor of the Church***

8:30A Mass

9:00A Adoration of the Blessed Sacrament

6:00P Bible Study

7:00P Choir rehearsal

Thursday, January 29***Weekday***

8:30A Mass

Friday, January 30***Weekday***

No Mass

Saturday, January 31***St. John Bosco, Priest*****Pasta Dinner Ticket Sales After Mass****Birthday Blessing during Mass****Blessing of Throats during Mass**

2:00P Confession

4:00P Mass

Sunday, February 1***4th Sunday in Ordinary Time*****Pasta Dinner Ticket Sales After Masses****Birthday Blessing during Masses****Blessing of Throats during Masses**

9:00A Mass-Childrens Liturgy of the Word

10:00A Coffee & Donut hr.

10:00A SOR Christian Comm.

Family Discussion

11:00A Mass

12:00P Coffee & Donut hr.

Parish Staff**Pastor:** Fr. Paul Gitau**Deacon:** Mark Robbins**Administrative Asst.:** Jodie Hickey x21**Adult Faith Formation Coordinator:****Director of Faith Formation:** Anselm Mesue x27**Coordinator of Music:** John Gaspar**Faith Formation & Liturgy Assistant:** Helen Stirpe x26**Funeral Planning:** Bonnie Serio**Facilities Manager:** Ben O'Brien x28**Finance Office:****Finance Council Chair:** Jack Black**Parish Council Chair:** Patrice DeAngelis**Parish Trustees:** Forest Shick & George Hanley

fr.paul.gitau@dor.org

mark.robbins@dor.org

jodie.hickey@dor.org

TBD

anselm.mesue@dor.org

john.gaspar@dor.org

helen.stirpe@dor.org

bonnie.serio@dor.org

ben.obrien@dor.org

webironfinance@dor.org

blackj1969@rochester.rr.com

Parish Office Hours

8:00 a.m. - 12:00 p.m. Monday-Friday

Phone: 671- 2100**Emergency Number:** 369-9687**Website:** www.stpaulsrcc.org**Diocese of Rochester:** www.dor.org**Financial Snapshot**

	December 2025	July-December 2025
Collections	\$75,956	\$266,643
Donations/ other revenue	\$8,360	\$30,961
Expenses	\$59,131	\$286,705
Operating surplus/deficit	\$25,185	\$10,899

Let Us Pray for Those in the Military

Jason Aman

Josh Bartlett

Bryan Gross

Cydney Blong

Tom Weisenreder

Michael J. Desiato

Mason Serrano

Daniel Thomas

Andrew Zani

Robert Wright

Jay Riesenberger



*This week the
Sanctuary Lamp burns for
Donald Brown
From
Peg Berry*

A **JIGSAW PUZZLE** is a set of numerous interlocking pieces that are assembled together to produce a complete picture. Each piece is unique. When fit together, each piece contributes to the entire puzzle. **Scriptural concepts use the metaphor of the Jigsaw Puzzle** to illustrate how diverse parts (scriptures, people, life events) interlock to reveal a greater, unified picture, typically centered on Jesus Christ or God's plan, with individual pieces (Scriptures, believers, life challenges) finding meaning only when assembled into the whole.

- **The Bible as a Puzzle:** Old Testament prophecies and New Testament fulfillment form a complete picture of Jesus; individual parts (verses, stories) gain meaning when connected to the whole narrative of Christ.
- **The Body of Christ:** Believers are unique, interlocking pieces that form one complete body, with each member contributing to the overall image and function.
- **Life's Journey:** Daily experiences, challenges, and questions are like scattered puzzle pieces; God, the "Master Builder," fits them together over time to reveal His purpose and bring wholeness.
- **Spiritual Growth:** Understanding God's will involves patiently assembling life's "pieces," aligning with Him to see how seemingly disconnected events serve His larger plan.

Biblical Concepts Illustrated by Jigsaw Puzzles

- **Unity in Diversity:** Different people and gifts (1 Corinthians 12) create one body.
- **Faith and Patience:** Trusting God to complete the picture even when the "box top" (future) isn't clear (2 Corinthians 5:7).
- **Christ as the Center:** The ultimate picture revealed by all the interlocking pieces of scripture and life is Jesus.

Interlocking Puzzle Pieces Fit Together

Most jigsaw puzzles are "fully interlocking," adjacent pieces interconnect with one another staying joined structurally allowing it to maintain its shape when moved. The fit is both visual and structural. However, non-interlocking puzzles are pieces that are not fully interlocking. The pieces match visually, but not always structurally which allows it to be moved.

God creates the Body of Christ to be like interlocking puzzle pieces, rather than non-interlocking ones. Each of us is endowed with unique strengths. When members of the Body find and use their strengths and value strengths in one another, we interconnect with each other to form a whole. Together we are stronger and can withstand changeable movements that are part of growth. We're designed to fit together to reflect the character of Jesus ... and for our connections to remain strong.

But if one doesn't know their strengths and use them, they may shift purposelessly, much like non-interlocking puzzle pieces that lack clarity about fit.

Interlocking Puzzle Pieces Produce Order

Once the pieces are dumped into a pile of "confusion" they are turned face up and the sorting process begins. Each puzzle piece displays just a tiny part of the picture's full image. Border pieces are grouped together. Similar colors or visual textures pieces are clustered. Awareness begins to bring order from the confusion.

Likewise, confusion develops when God's people are not aware of their strengths. Awareness of your strengths begins to bring about order from the confusion.

The process begins when you allow God to "sort" – or identify – your strengths. In discovering your strengths, you begin to see the tiny portion of God's image that you represent. God can reveal where He has placed you to use those strengths. He can use you to begin to create order.

Interlocking Pieces Build on One Another

After sorting the pieces, the interlocking puzzle comes together piece by piece, as one joins with another. A correctly-placed puzzle piece paves the way for more puzzle pieces to be added.

Likewise, the people in Body of Christ are assembled one at a time beginning with one person willing to be used where God places them. That willingness allows them to lead from their strengths and to interlock with another showing that their strengths are needed also to complete the "Picture".

Helen

St. Paul's 3rd Annual Pasta Dinner February 7 at 5:00 p.m.

Pasta Dinner Ticket Sales

Tickets will be available for purchase after the Masses on the following dates: **Saturday, January 24, Sunday, January 25, Saturday, January 31, and Sunday, February 1.** Additionally, tickets can be purchased from the parish office during office hours from 8:00 a.m. to Noon beginning Monday, January 26 through Friday, January 30.

The ticket prices are \$15 for adults and \$5 for kids ages 10 and under. Exact cash or check accepted. Thank you for your support in promoting this event!

Pasta Dinner Placemats



we are preparing placemats for the upcoming Pasta Dinner. Individuals or businesses can purchase a slot for \$10. This presents a wonderful opportunity to advertise your business, give a shout-out to someone special, or promote your family's name. More importantly, it's a way to sponsor this fantastic event.

Please note that placemat advertisements or shout-outs are due by the end of January. If you or anyone you know is interested, or if you need more information, feel free to reach out to me via email: anselm.mesue@dor.org

Pasta Dinner Call for Volunteers

Thank you for your continued support and dedication to our Faith Formation programs. If you are interested in helping the Confirmation candidates, their parents, and the Knights of Columbus as a volunteer for the pasta dinner please email Anselm. Your assistance would be greatly appreciated and would make a significant difference. Thank you for considering this opportunity to support our Confirmation candidates and their families.

Happy Birthday to You!



Fr. Paul will give a special blessing during Masses next weekend, January 31 & February 1 as we celebrate February birthdays.



Children's Liturgy of the Word (CLOW) returns Sunday, February 1st during the 9:00 a.m. Mass. Children in School of Religion and others in grades Kindergarten to seventh are invited to participate in Children's Liturgy of the Word. After the Opening Prayer at Mass, Fr. Paul will invite the children along with their phenomenal adult catechists to come up to the foot of the sanctuary for a blessing and dismissal. During CLOW, the children will take part in the Sunday scripture at their level. Terminology at the appropriate age level helps the children to understand and appreciate the Gospel message of Jesus Christ. This is a great way to help the kids in their faith formation and development. We strongly exhort parents to encourage their kids to attend. Participation at CLOW is required for all those preparing for the First Eucharist and First Penance and Reconciliation.

Coffee & Donut Hour

Sunday, February 1st after Masses
10:00 a.m.
12:00 p.m.



Blessing of Throats

In the Catholic Church there is the worldwide customary practice of blessing throats on February 3, the Memoria of St Blaise, or at the weekend Masses near the feast. Next weekend, at all Masses, throats will be blessed. Why are throats blessed on February 3 or on a date close to February 3? Why is the blessing of throats associated with St Blaise?

St Blaise was the bishop of Sebaste in Armenia in the fourth century. Very little is known about his life. According to various accounts, he was a physician before becoming a bishop. Before being martyred, he is said to have healed a boy who was choking because of a fish-bone in his throat. Since the eighth century, Saint Blaise has been invoked on behalf of the sick, especially those suffering from illnesses of the throat. We pray in a special way today for protection from afflictions of the throat and from other illnesses. The blessing of Saint Blaise is a sign of our faith in God's protection and love for us and for the sick. The Church has always shown great love and care for those suffering from any form of illness. The Church teaches that: "part of the plan laid out by God's providence is that we should fight strenuously against all sickness and carefully seek the blessings of good health, so that we may fulfill our role in human society and in the Church." **Pastoral Care of the Sick: Rites of Anointing and Viaticum, no. 3.**

During the blessing of the throats the minister, touching the throat of each person with crossed candles says: Through the intercession of Saint Blaise, bishop and martyr, may God deliver you from every disease of the throat and from every other illness. In the name of the Father, and of the Son, and of the Holy Spirit.

Each person responds: Amen.

In the Gospels, we read how Jesus is concerned about the sick. In the Gospel of Mark, after this Resurrection while commissioning the eleven, Jesus said: "go into the whole world and proclaim the gospel to every creature. Whoever believes and is baptized will be saved; whoever does not believe will be condemned. These signs will accompany those who believe; in my name they will drive out demons, they will speak new languages. They will pick up serpents with their hands, and if they drink any deadly thing, it will not harm them. **They will lay hands on the sick, and they will recover**" (Mark 16:15-20).

May St Blaise intercede for us so that we may be delivered from any diseases of the throat and from every other illness.

Anselm



A Prayer for Catholic Schools

*Good and gracious God,
we pray that the focus and foundation of
our Catholic schools
will always be the person of Jesus Christ.*

*May we remember that we are
called to work together
as part of your universal Church
to build your kingdom in our midst.*

*Let each of our Catholic schools,
no matter how large or how small,
be recognized by its commitment to excellence,
its efforts to form the whole child,
its hospitality towards all,
and its intentional development as a community of
faith, collaboration, trust, and love.*

*Help us to view every aspect of our world
through the lens of the Gospel and the
teachings of our faith, and let every member of our
Catholic school communities
become a visible example of what it means
to put faith into action.
Amen!*



**Wednesday, January 28 at
6:00 p.m. in the worship area**

Ministry Schedule for January 31 & February 1, 2026

If **TBD** or **Volunteer Needed** is listed, please contact the ministry coordinator to see if that position still needs to be filled. Thank you for all you do for St. Paul's!

	4:00 PM	9:00 AM	11:00 AM
Acolytes	TBD TBD	TBD TBD	TBD TBD
Cantors	TBD	TBD	TBD
EMHC	Mary Beth Speicher Sue Dettman	Jack Black Volunteer Needed	Gina McNamara Volunteer Needed
Greeters	Ellen Oinen Don Oinen	Corey Volo Jeanne Leo	Anne LaClair Nancy Willard
Lectors	TBD	TBD	TBD
Linens	No linen pick up this week		
Sacristans	Sue Dettman	Eileen Turner	Sharyn LiPari
Stream Team	Rod Campbell	Jerry Healey	Tom Napoli
Ushers	Sue Dettman Alice Bower	TBD TBD	Dallas & Joanne Miller Volunteer Needed



**Rochester Hope
January Wish List**

Peanut butter, sugar, socks, gloves, mittens, diapers sizes 3,4,5 & 6, toothpaste, bar soap & tooth-brushes (individually wrapped)

Please place your donations in the collection box in the Narthex before or after Mass. The Good Sam Outreach Committee will deliver our donations on a regular basis. Thank you for your generosity.





**ST. ANN'S
COMMUNITY**
at Cherry Ridge

Luxury Apartments & Cottage Homes

To schedule a
tour or for more
information:
(585) 697-6702

900 Cherry Ridge Boulevard • Webster, NY
stanncommunity.com/cherry-ridge



FREE AD DESIGN

with purchase
of this space

CALL 800-477-4574

WILLARD H. SCOTT FUNERAL HOME, INC.

12 South Ave., Webster
265-3640

www.willardhscott.com

ToptotBottomRochester.com

Ask yourself, is your repairman too
expensive, unreliable, unpredictable?

#1 IN REPAIRS

- Gutter Cleaning
- Roofing
- Chimney
- Gutters
- Masonry
- Siding
- Carpentry
- Insulation
- Snow & Ice
- Chimney Liners
- Basement Walls
- Painted/Repaired
- Water Proofed
- Doors, Etc.

Since 1988
TOP TO BOTTOM

Expert Evaluation
Fully Insured
Free Estimates
Guaranteed
Senior Discount
Your Safest Choice

338-9865

For 24 Hour Emergencies,
Call 764-8204



34th Year Parish Sponsor Johnathon A. Geer

\$10 EGG COMBO BREAKFAST!

Egg, Potato, Toast & Coffee - Mon-Thurs
(Except Holidays)

Must Present Coupon in Person
(limit 1 coupon per party)

2171 West Henrietta Rd., Brighton, NY
SUNNYSFAMILYDINER.COM

Weinstein Randisi
YOUR FAMILY'S LAW FIRM

Nursing Home Questions?
Estate Planning Needs?
We can help!

Andy & Elizabeth Randisi

Elder Law Attorneys
St. Paul's Parishioners

(585)-248-3800

www.randisilaw.com

WE'RE HIRING!

AD SALES EXECUTIVES

BE YOURSELF.
BRING YOUR PASSION.
WORK WITH PURPOSE.

- Paid training
- Some travel
- Work-life balance
- Full-Time with benefits
- Serve your community



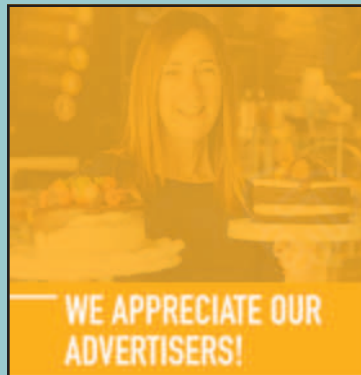
Contact us at
careers@4lpi.com or
www.4lpi.com/careers

LET'S GROW YOUR BUSINESS

Place Your Ad Here
and Support Our Parish!

**CONTACT ME
Brett Burt**

bburt@4LPi.com
(800) 477-4574 x6443



**WE APPRECIATE OUR
ADVERTISERS!**

NEVER MISS OUR BULLETIN!

SUBSCRIBE

Have our bulletin emailed
to you every week.

Visit www.parishesonline.com



Law Office Of
THOMAS J. DISALVO
ESQ., P.C.

672 Ridge Road
Webster, New York 14580

585.787.6920

Real Estate, Wills,
Powers of Attorney
Health Care Proxies

tomdisalvo@yahoo.com
www.Disalvolawoffice.com



Ad info. 1-800-477-4574 • Publication Support 1-800-888-4574 • www.4lpi.com

St. Paul's, Webster, NY

06-0229



Where Great Landscapes Begin

Call Today to Schedule Your
Lawn Fertilization & Weed Control
Program & Receive Free Grub Control

(585) 872-5073

info@townandcountryent.com
townandcountryent.com



catholicmatch®

New York



CatholicMatch.com/NY



WHITNEY & COMPANY

Investment Management and
Wealth Planning

www.whitneyandcompany.com

**William G.
Shaheen, CPA**

585-232-6200

FALVO

UNERAL HOME INC.

**Richard Falvo,
Mark Falvo
& Christopher Falvo**

**1295 Fairport
9 Mile Pt. Rd. (Rt. 250)
Webster • (New Location)
1395 North Goodman Street
872-1010**



Leo J Roth Corporation
Solutions Since 1988

All Your Professional
Services in One Place

HVAC • Plumbing • Roofing
Residential & Commercial
24/7 Service

Call Today at
(585) 872-0220

or Visit leojroth.com
For a Free Quote



WE'RE HIRING!

AD SALES EXECUTIVES

**BE YOURSELF.
BRING YOUR PASSION.
WORK WITH PURPOSE.**

- Paid training
- Some travel
- Work-life balance
- Full-Time with benefits
- Serve your community



Contact us at
careers@4lpi.com or
www.4lpi.com/careers

IF YOU LIVE ALONE You Need

MDMedAlert!™
At HOME and AWAY!

As Low As
\$19⁹⁵
/mo.

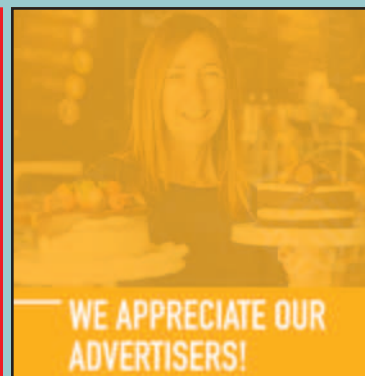
- ✓ Ambulance ✓ Police
- ✓ Family ✓ GPS & Fall Alert



CALL NOW!
800.808.9294



md-medalert.com



SUPPORT OUR PARISH

Local business ads
sponsor the printing of
our bulletin.
4lpi.com/adcreator



Real Estate Services

(585) 671-5180

howardhanna.com

office.webster@howardhanna.com

**1930 Empire Blvd, Ste 200
Webster, NY 14580**

**SUPPORT OUR
ADVERTISERS!**



Ad info. 1-800-477-4574 • Publication Support 1-800-888-4574 • www.4lpi.com

St. Paul's, Webster, NY

06-0229